

ERRATUM

Action of *Ganoderma lucidum* mycelial growth filtrates on *Erysiphe diffusa* and embryotoxicity assessment in a chicken embryo model

Mycheli P. da Cruz^{1#*}, Lucas T. Larentis^{2#}, Edgar de S. Vismara², Lilian de S. Vismara², Patricia F. de Freitas², Sérgio M. Mazaro²

Acta Biologica Szegediensis, Volume 65(1):47-57, 2021; DOI:10.14232/abs.2021.1.47-57

In the article by Mycheli P. da Cruz et al., the following errors were found.

- (p. 49), where it reads: "[...] under a controlled temperature of 37.6 °C, relative humidity of 75% and constant [...]", it should read: "[...] under a controlled temperature of 37.5 °C, relative humidity between 50% and 60% and constant [...]".

- (p. 50), Table 2, column "V" should be "S**"; column "S/HR**" should be "HR". Then, the text "V: egg viability rate" should be removed from the table subtitle.

- (p. 51), where it reads: "Thus, it can be said that the *G. lucidum* MGF did not significantly affect embryonic vi-

ability [...]", it should read: "Thus, it can be said that the *G. lucidum* MGF did not significantly affect egg viability [...]".

Additionally, there were few errors in the Figures 2 and 4:
- (p. 52), all images on Fig. 2. are wrongly scaled – and in one of them the scale doesn't appear.

- (p. 53), on Fig. 4. the numbers are axis-rotated 45° to the left.

The authors and the publisher apologizes for these mistakes. All these errors have been corrected in the online PDF version and the original article has been updated.

The corrected figures are:

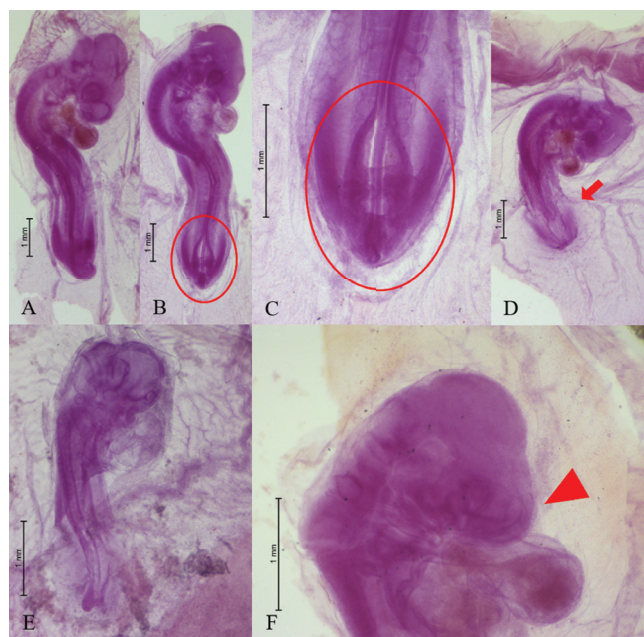


Figure 2. *G. gallus* embryos exposed to *G. lucidum* mycelial growth filtrates (MGF) through the air chamber and incubated for three days.

A: HH18 embryo with normal morphological traits; B: HH17 embryo presenting gastroschisis, shown in detail in C (circle); D: HH18 embryo with caudal atrophy (arrow); E: embryo in an undetermined stage of development, totally malformed; F: HH17 embryo showing failure in the telencephalon development (arrowhead).

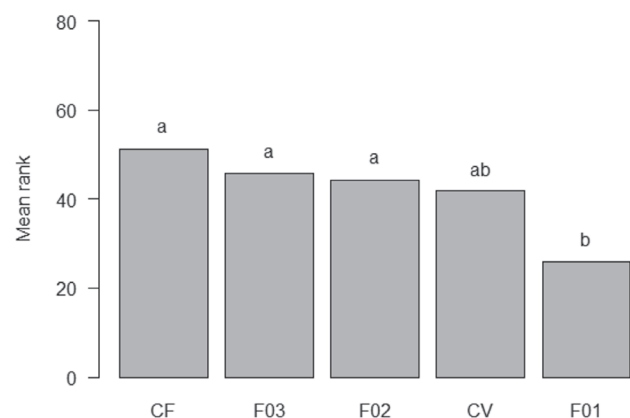


Figure 4. Comparison of the average number of ranks distributed by the Kruskal-Wallis test regarding Hamburger-Hamilton (HH) embryonic stages.

CF: negative control; CV: PD culture medium; F01: *G. lucidum* MGF; F02: lignin-elicited *G. lucidum* MGF; F03: AS-elicited *G. lucidum* MGF. Means followed by different letters were considered statistically different from each other by the Kruskal-Wallis test, at 5% significance level.

